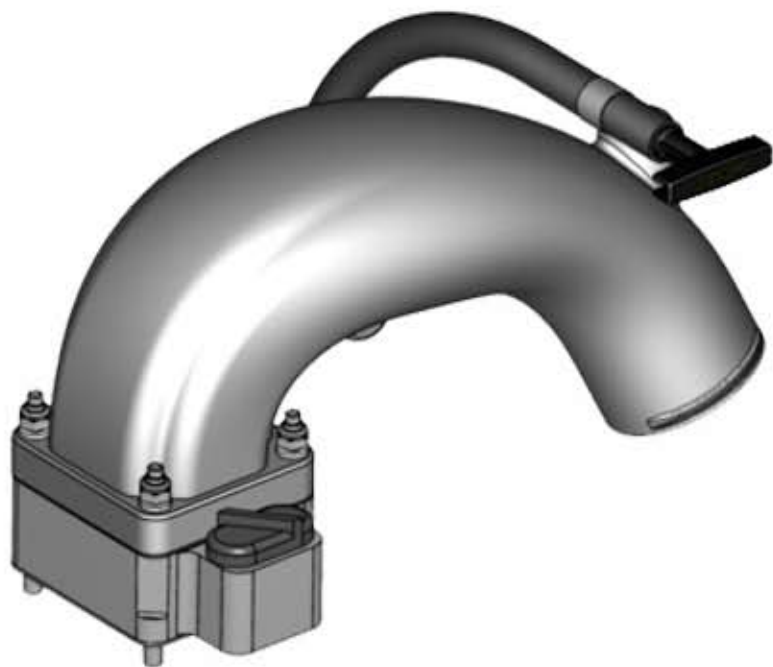




INTAKE MANIFOLD INSTALLATION INSTRUCTIONS

FOR USE ON
1994-1998 DODGE RAM
12V 5.9L CUMMINS^(R) DIESEL

*NOT FOR USE ON TRUCKS WITH HYDRO BRAKE BOOSTER



FASTCORE LLC
1451 ENGINEER ST SUITE B
VISTA, CA 92081



MADE IN THE USA.

www.cfmplus.com

© 2005 Fastcore LLC



Dear Customer,

Congratulations on your purchase of the world's highest performance and most technologically advanced intake manifold on the market for the Cummins Diesel.

For customer service please e-mail service@cfmplus.com or call our Customer Service Department at 760-598-2478 between 8:00 am and 4:00 pm Pacific Standard Time.
Thank you.

INSTALLATION PRACTICES

WARNING: 

Please read this entire manual before you start and follow all instructions.

WARNING: 

Before you begin any work, please disconnect the ground cable/cables from the battery/batteries of your truck.

WARNING: 

Do not begin this installation unless your engine is completely cool.

WARNING: 

Please do not over-tighten fasteners.



REMOVAL OF THE STOCK INTAKE:

1.) Begin by removing the dipstick from its tube. Then remove the dipstick bolt on the top of the stock intake and save for reuse. Gently push the dipstick towards the back of the engine compartment and direct it to come up over the wiring that is near the firewall.

2.) Loosen the boost hose clamp on the inlet end of the stock intake and slide the hose off. Be careful to not allow debris to drop into the boost hose opening.

3.) From underneath the truck, loosen the hose clamp at the inner-cooler and carefully remove the inner-cooler pipe with the boost hoses.



4.) Remove the 5 bolts holding the stock intake to the engine. Carefully remove the stock intake from the engine, being sure no debris falls into the engine through the heater block.

CAUTION: USE A CLEAN RAG TO COVER THE ENGINE INTAKE OPENING BEFORE PROCEEDING TO THE NEXT STEP.

5.) Using a gasket scraper, being careful not to gouge the mating surfaces, remove the old gasket material from the heater block. Thoroughly clean and dry the sealing surface.

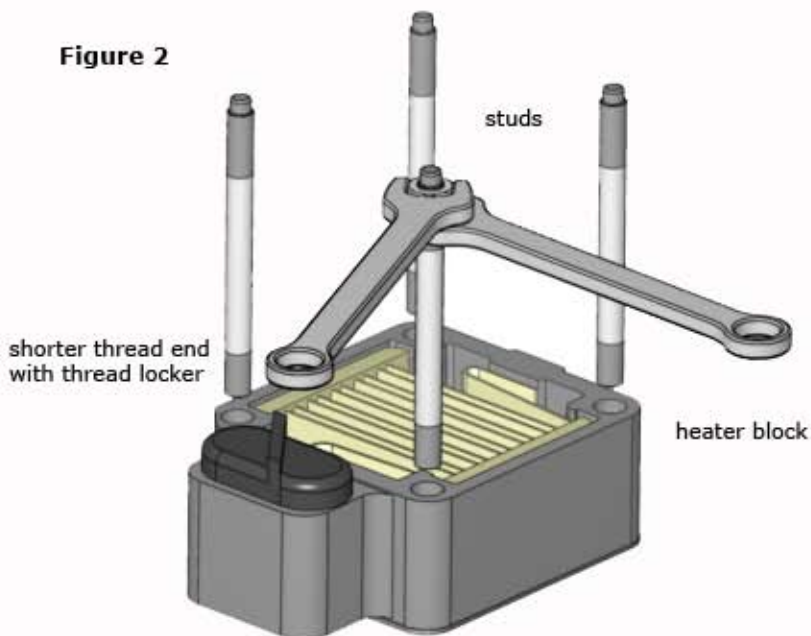


CFM+ INTAKE INSTALLATION:

CAUTION: Never use any gasket sealants when installing this intake.

1.) Begin by installing the 4 supplied threaded studs from your CFM+ intake packaging. Be sure to install the shorter threaded end with the thread locker on it into the engine intake mounting holes. See Figure 2. Using the two non-locking jam nuts provided, tighten the studs into the engine by threading both nuts onto one of the studs. Tighten the nuts against each other using two 13mm open end wrenches or one wrench and a ratchet and socket. Now, tighten the stud by turning the top nut with the wrench or ratchet. Be sure not to over-tighten. Remove the two nuts and repeat the process on the remaining studs.

Figure 2



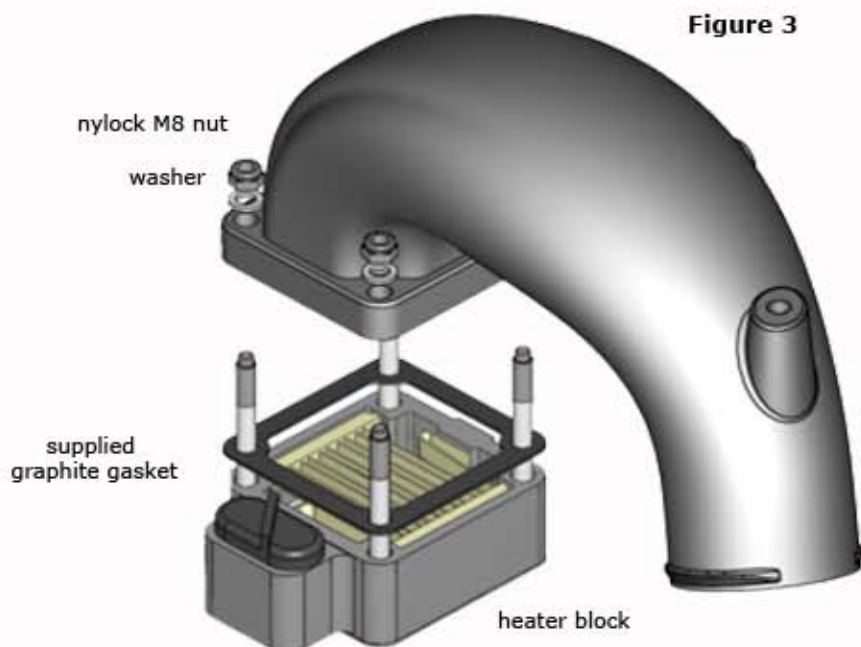
2.) Slide the supplied graphite gasket from your CFM+ intake package onto the studs and against the face of the heater block.

Note: Only use the special supplied washers for steps 3 & 4.

3.) Next, slide the CFM+ intake over the studs and against the gasket and install one washer and one nylock nut on one of the back studs and tighten by hand. This will hold the CFM+ intake in place.

4.) Place the remaining three washers on each stud.

5.) You can now install the remaining three M8 nylock nuts onto each stud and tighten all four evenly to 140 in-lbs. Again, be careful not to over-tighten. With the CFM+ intake tightened in place, you are ready to re-install the dipstick. Gently rotate the dipstick towards the new location. Once lined up, install the dipstick mounting bolt using your fingers first to keep from cross threading the threaded insert and then tighten. Be careful not to over-tighten.



CFM+ INSTALLATION CONTINUED:

- 6.) Next loosen the boost hose clamp on each end of the original inner-cooler pipe removed in step 3 of "Removal of the Stock Intake" on page 3. Remove both boost hoses and clamps for reuse.
- 7.) Place a clamp and the elbow boost hose on the longer straight end of the new supplied inner-cooler pipe. Then place a clamp and the connector boost hose on the other end of the supplied inner-cooler pipe. Leave both clamps loose at this time.
- 8.) Feed the new inner-cooler pipe into position with the elbow boost connector located at the truck inner-cooler. Don't forget to pre-position the final 2 clamps for easy reach. Slip the elbow onto the inner-cooler and the straight connector end onto the CFM+ intake.
- 9.) With both ends mounted rotate the new supplied inner-cooler pipe to achieve maximum clearance all around the pipe. Position all the clamps for tightening and torque to about 60 in-lbs.
- 10.) Install supplied 8mm by 20mm long bolt into the remaining empty hole left from the removal of the stock intake.
- 11.) Reconnect the battery cables.





WARRANTY INFORMATION

CFM+ Limited Warranty

Fastcore LLC warrants the replacement of CFM+ Intake due to defects in material and/or workmanship according to the following conditions:

The CFM+ Intake is warranted to the original retail purchaser only and is limited for one year from the original date of purchase. This warranty is not transferable.

This warranty is limited to replacing the defective Intake without charge and Fastcore LLC shall in no event be responsible for consequential or special damages. Labor and transportation charges are not included.

Proof of purchase and date of purchase are required to validate protection under this limited warranty.

Any Intake that has been modified or the insert threads that have been stripped or cross threaded is not covered by this limited warranty.

This Intake is not intended for use in any competitive event or activities. This limited warranty is void where the Intake has been used in any of these ways.

Claims must be made through Fastcore LLC and defective part must be returned for evaluation.

This warranty is expressly in lieu of any other warranties, expressed or implied, including implied warranty of merchantability or fitness for a particular purpose.

This warranty gives you specific legal rights and you may also have other rights which vary from state to state.

For warranty and return information please visit our web site at ***www.cfmplus.com*** and click on the customer service link.



www.cfmplus.com



.MADE IN THE USA.

For God so loved the world that He gave His one and only Son, that whoever believes in Him shall not perish but have eternal life. John 3:16